

Looking for Champions: Lessons Learned from the Tiffany Pinckney Tragedy

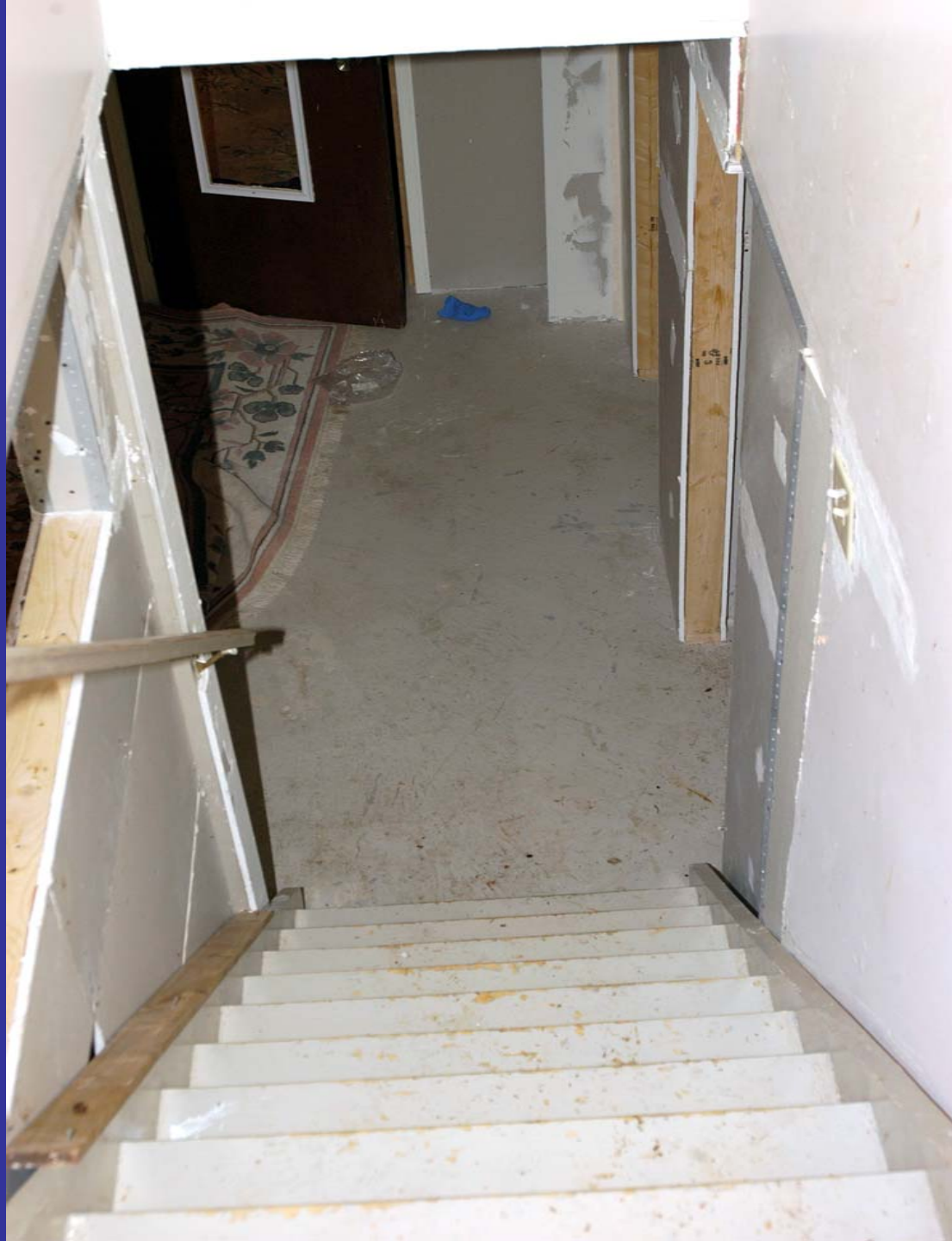
Jennifer LeBlanc
Peggy Corrigan-Dench
Lori Betts
Gail Jones

Tiffany Pinckney

March 22, 1982 – April 2, 2005



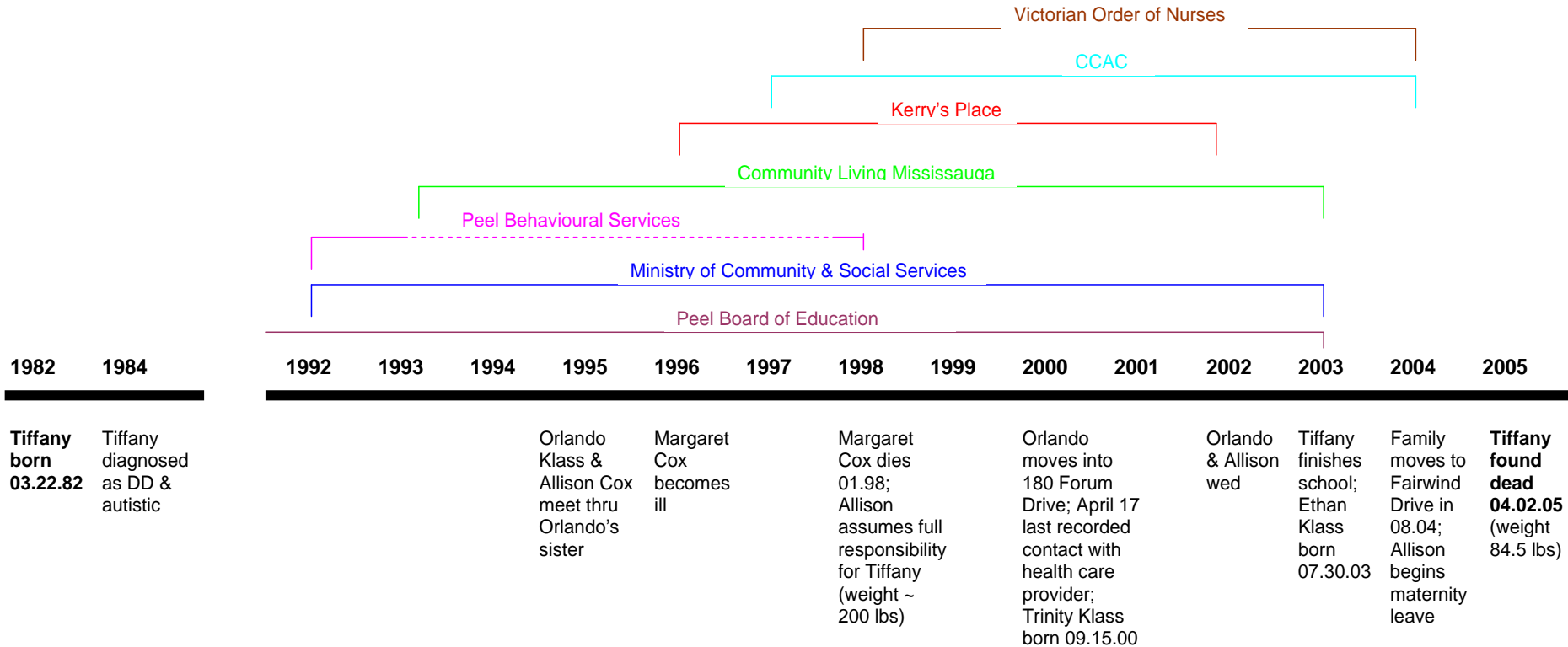








Vulnerable Adults Project Timelines for Tiffany Pinckney





Court Findings

- Tiffany's brother-in-law Orlando pled guilty to criminal negligence causing death and sentenced to 2 years house arrest
- Tiffany's sister Allison found guilty of failure to provide the necessities of life, criminal negligence causing death, and manslaughter.
- Allison sentenced to 9 years penitentiary on the manslaughter conviction

Why are Individuals with Developmental Disabilities at Increased Risk?

Additional Vulnerability Factors:

1. Dual diagnosis such as mental health conditions
2. Higher rate of physical poverty due to difficulty securing well paid work, low rate of disability pensions, higher rate of medical & care assistance required
3. Accompanying difficulty in communication and as such increased challenges in advocating for oneself
4. Social isolation over a lifetime
5. Higher risk of being prescribed psychotropic medications (often in higher doses and in combination) and often suffering often serious side effects of these.



Additional Vulnerability Factors Continued

6. Some disabilities such as autism, by nature involve difficulties in social interactions & as such place the person at increased risk due to the higher level of behaviours that others may not understand and inaccurately view as deliberate or provoking in nature
7. Decreased level / quality of education and as such less resources to draw on in decision making
8. Often in a position of being reliant on others for support in the areas of personal care and daily routines
9. Societal attitudes that are devaluing

Broader Issues Raised as a Result of Tiffany's Death

Tiffany is not alone.

NEED FOR:

1. Increased **awareness** of prevalence of abuse amongst adults who are vulnerable & **zero tolerance culture**
2. **Improved reporting and response mechanisms**
3. Building on **preventative supports and informal supports** for increased safety and ensuring true citizenship

Community Discussion Process

- Step 1: Debriefing Session with Peel Regional Police and Peel Crown Attorney Office to better understand what happened for Tiffany and her family
- Step 2: Local Peel Region Session – those who knew Tiffany or had potential to know her
- Step 3: Broader Community Discussions involving those in Steps 1 & 2 and also representatives from other sectors and jurisdictions

Participant Summary

- Local Developmental Services Agencies
- Local APSW
- Police; Mental Health Coordinator & Elder Abuse & Vulnerable Persons Coordinator
- Initial debriefing included police detective and crown attorney
- CCAC
- MCSS – local regional office and Developmental Services Policy Branch
- Board of Education
- Community Living Ontario
- Freedom From Harm Working Group (which included a representative from People First of Ontario)
- ARCH
- OPGT
- Director of Social Policy with NB Assoc. for CL
- Dr. Sheila Mansell who helped develop the training and protocols in abuse prevention & response in Alberta



Recommendations From Community **Discussion Process**

- Recommendations which may have local implications
- Recommendations which may have provincial implications
- General recommendations relating to prevention
- Recommendations related to increasing public and professional awareness that could be local &/or provincial



Recommendations – Local Implication

- Easier reporting and faster response
- Increased contact with and shared knowledge of situations
- Increased ability to identify situations of abuse/neglect
- Better transitions and person centred planning
- Increased individual, public, and professional information



Recommendations

Provincial Implication

- Develop best practices
- Promote inter-sectorial networks
- Create specific legislation
- Expand roles of existing resources
- Mandate training and information



General Recommendations for Prevention

- Increase social inclusion and societal awareness
- Increase education of people with disabilities, public, caregivers, service providers
- Develop circles of support
- Greater emphasis on promoting support groups for families caring for a vulnerable adult
- Greater emphasis on providing respite



Recommendations for Increasing Public and Professional Awareness **(Local &/or Province Wide)**

- Core message
- Public awareness campaign in range of languages
- Use existing media and help-lines
- Use existing settings for awareness campaigns
- Educate neighbourhood groups
- Create website to provide info
- Resource materials
- Promote self-advocate groups to speak to professionals and public
- Improved communication between service providers and sectors
- Increased training of professionals
- Mandatory and ongoing training of staff and volunteers



Tiffany Pinckney
March 22, 1982 –
April 2, 2005

Dedication on Community Report

This work and report is dedicated to the memory of Tiffany Pinckney.

May our honouring of the past and our memory of Tiffany assist us to humbly look to a future where we can together live with greater connectedness, safety and hope.



Questions and Discussion